

# Grand Canyon Unified School District

Coconino County

Efficiency peer groups 6 and T-8, Achievement peer group 4<sup>1</sup>

Legislative district(s): 6

District size, location:

Small, Rural

Students attending:

274

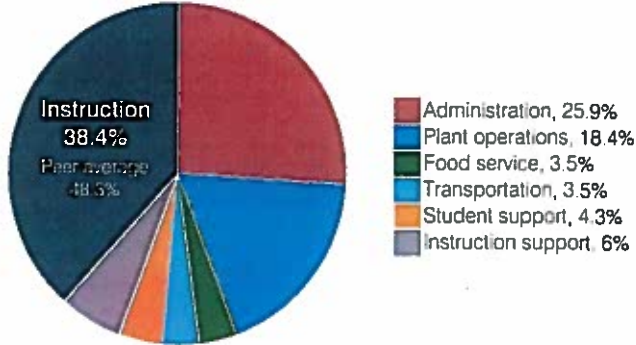
Number of schools:

2

## OPERATIONAL EFFICIENCY

## STUDENT ACHIEVEMENT, STUDENT AND TEACHER MEASURES, AND REVENUES

### Spending by operational area



### ADE-assigned school letter grades

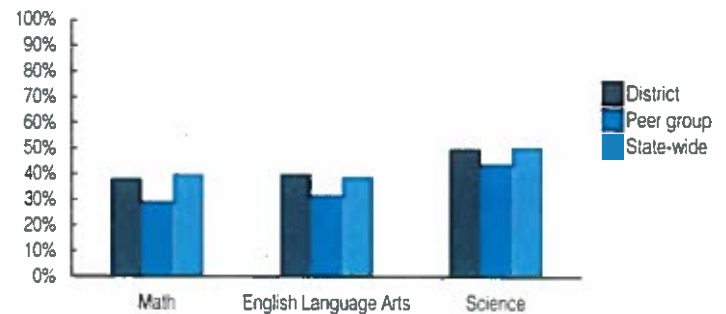
Grade	Number of schools	Percentage of schools
A	1	50%
B	1	50%
C	0	0%
D	0	0%
F	0	0%

### Efficiency measures relative to peer averages

Operational area	Measure	District	Peer average	State average
Administration	Cost per pupil	\$4,681	\$1,744	\$860
	Students per administrative position	28	43	66
Plant operations	Cost per square foot	\$11.91	\$5.27	\$6.34
	Square footage per student	280	321	156
Food service	Cost per meal	\$5.95	\$3.96	\$3.02
Transportation	Cost per mile	\$2.92	\$3.03	\$4.05
	Cost per rider	\$1,663	\$1,225	\$1,301

Very low    Low    Comparable    High    Very high

### Students who passed State assessments



### Per pupil spending

Spending by area	District		Peer average	State average
	2017	2018	2018	2018
Instruction	\$ 6,881	\$ 6,946	\$ 5,556	\$ 4,480
Administration	3,632	4,681	1,744	860
Plant operations	3,024	3,339	1,706	988
Food service	555	653	546	425
Transportation	621	632	592	388
Student support	760	775	672	693
Instruction support	1,236	1,078	393	462
<b>Total operational</b>	<b>16,709</b>	<b>18,104</b>	<b>11,209</b>	<b>8,296</b>
Land and buildings	0	40	1,077	827
Equipment	642	773	601	409
Interest	103	67	162	228
Other	168	0	60	169
<b>Total nonoperational</b>	<b>913</b>	<b>880</b>	<b>1,900</b>	<b>1,633</b>
<b>Total per pupil spending</b>	<b>\$ 17,622</b>	<b>\$ 18,984</b>	<b>\$ 13,109</b>	<b>\$ 9,929</b>

### Student and teacher measures

Measure	District	Peer average	State average
Attendance rate	94%	94%	94%
Graduation rate (2017)	100%	85%	78%
Poverty rate (2017)	14%	13%	19%
Special education population	22%	13%	12%
Students per teacher	11.0	16.6	18.4
Average teacher salary	\$47,341	\$47,740	\$48,951
Amount from Prop 301	\$5,080	\$6,338	\$6,411
Average years of teacher experience	10.1	11.9	11.4
Percentage of teachers in first 3 years	31%	17%	19%

### Per pupil revenues

Revenues by source	District		Peer average	State average
	2017	2018	2018	2018
Federal	\$ 2,358	\$ 3,347	\$ 2,405	\$ 1,317
State	4,740	3,944	4,080	4,011
Local	11,337	11,720	8,027	4,592
<b>Total per pupil revenues</b>	<b>\$ 18,435</b>	<b>\$ 19,011</b>	<b>\$ 14,512</b>	<b>\$ 9,920</b>

### Select revenues from common sources

Source	District	Peer average	State average
Equalization formula funding	\$ 7,064	\$ 7,121	\$ 7,175
Grants	873	1,081	2,252
Donations and tax credits	336	379	337

### Select revenues from less common sources

Source	District	Peer average	Number of peers receiving
Desegregation	\$ 0	\$ 0	0 of 18
Small school adjustment	3,651	5,479	5 of 18
Federal impact aid	1,505	2,296	3 of 18
Voter-approved levy increases	650	660	14 of 18

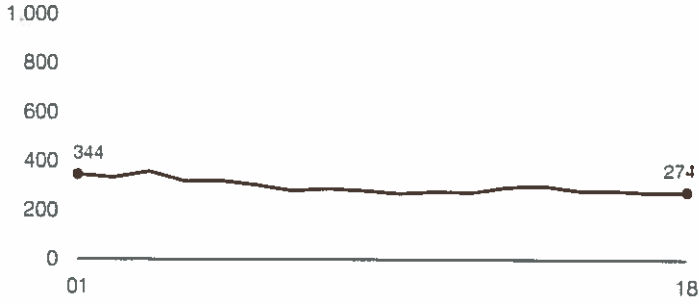
<sup>1</sup> See Appendix A for information such as districts included in each peer group and Appendix B for sources and methodology.

**Instructional spending percentage**

Year: 2001 2002 2003 2004 2005 2006 2007 2008 2009 2010 2011 2012 2013 2014 2015 2016 2017 2018  
 Percentage: 53.1 52.5 52.7 53.5 53.7 49.2 48.1 45.9 48.5 48.8 46.7 50.0 47.7 52.4 43.9 43.6 41.2 38.4

**TRENDS AND FINANCIAL STRESS ASSESSMENT**  
 Fiscal years as indicated

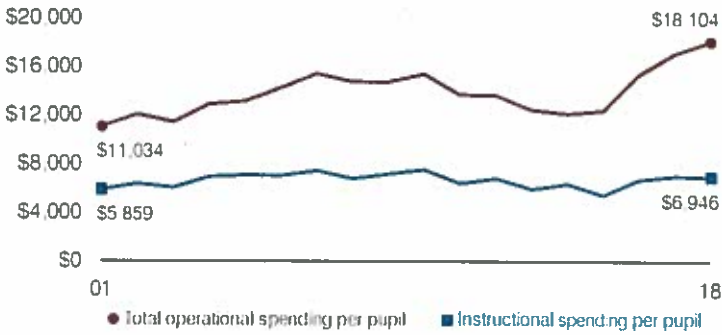
**Students attending**



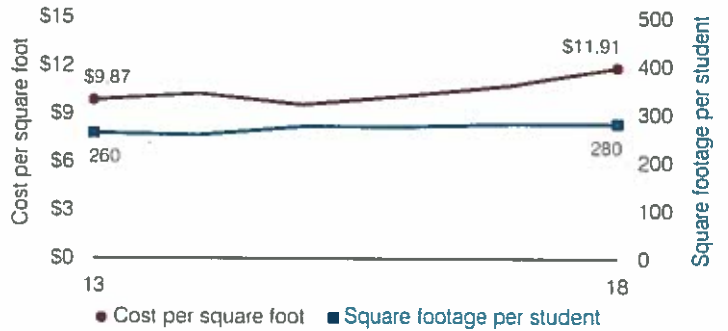
**Administrative cost per pupil**



**Total operational and instructional spending per pupil (inflation adjusted to 2018 dollars)**



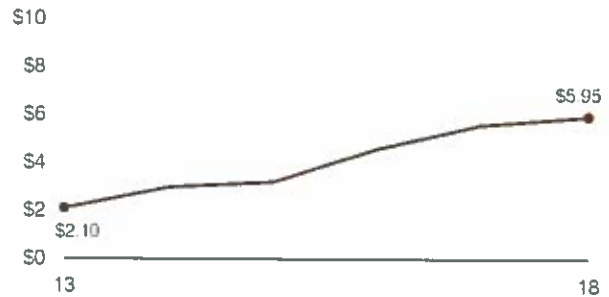
**Plant cost per square foot and square footage per student**



**Average teacher salary**



**Food service cost per meal**



**Financial stress assessment**

Overall financial stress level: **Low**

Measure: 2016 through 2018	Assessment
Change in number of district students	Small school adjustment
Spending exceeded operating/capital budgets	No overspending
Spending increase election results	Voter-approved
Operating reserve percentage, Trend	Impact Aid Fund reserve
Years of capital reserve held	More than 3 years
Current financial and internal control status	Compliant

Low Moderate High

**Transportation costs per mile and per rider**

